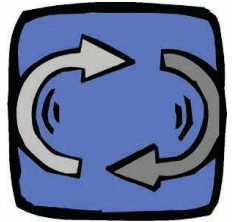
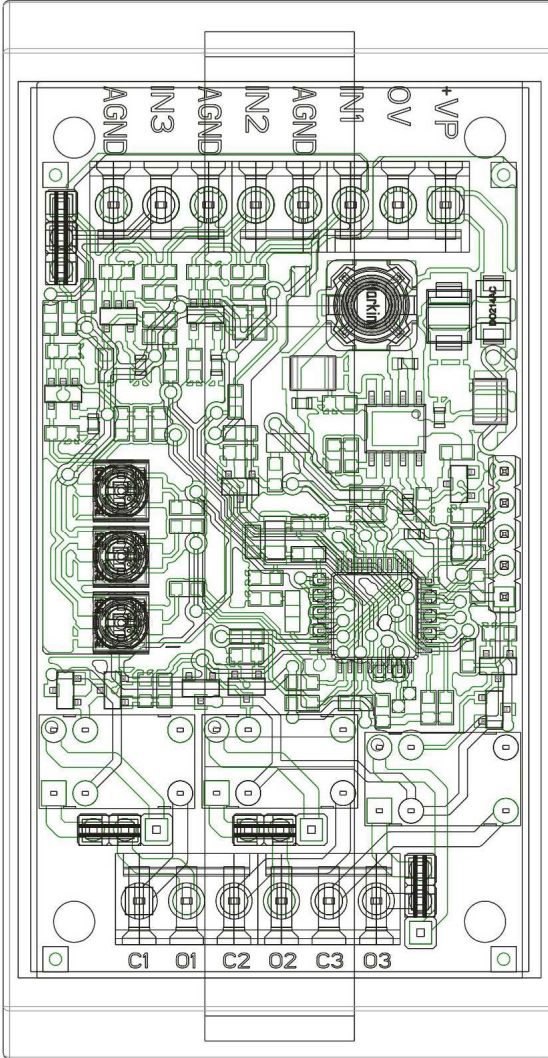


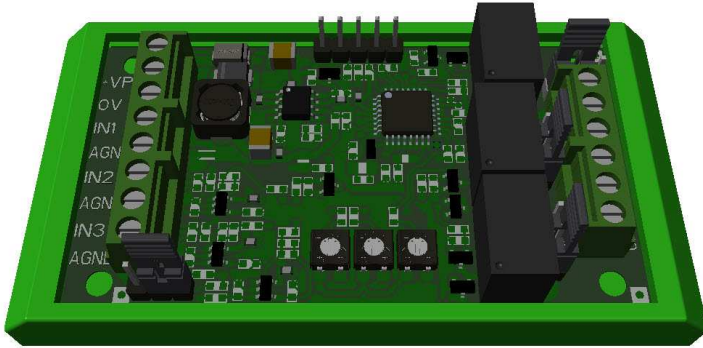
SCHEDAPT

MOTOR THERMAL PROBES CONTROL CARD

Technical manual

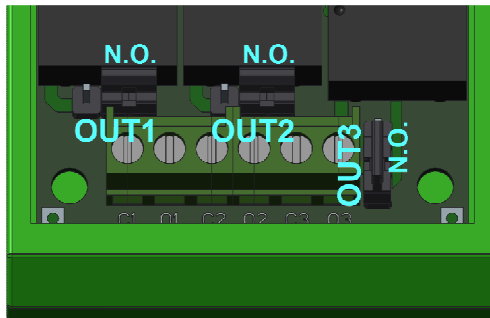
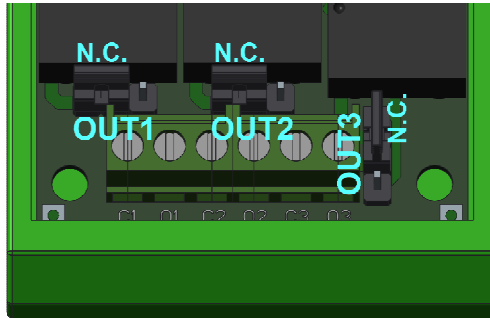


motive
power transmission



This Motive card allows to constantly monitor the motor temperature by reading the PT100 and/or PTC temperature probes inside the motor and to provide a relay contact for every output (normally closed by default, or normally open by shifting its jumper – Pic.1)

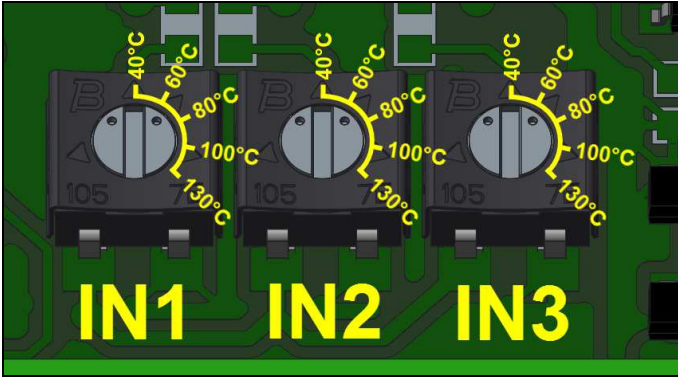
Pic.1



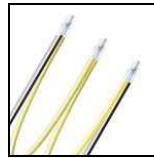


which, connected in series to the coil of the external power line contactor (max 125Vac 0,5A / 24Vdc 1A), will switch off the power supply of the motor at an alarm temperature (Motive default setting for PT100 is 130°C, for PTC according to PTC's data). To modify the PT100 alarm temperature, rotate the trimmer according to Pic.2).

Pic.2

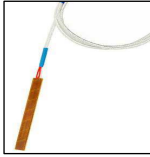


SCHEDAPT is capable to read PTC Motive thermistors

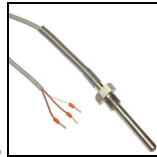


or up to 3 PT100

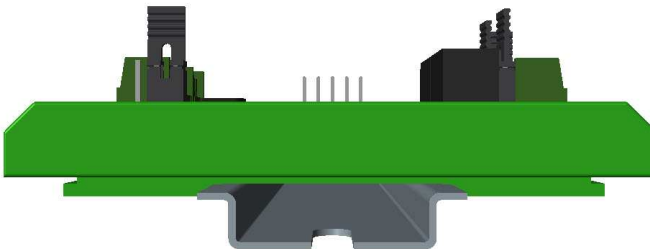
probes, both for winding



and for bearings



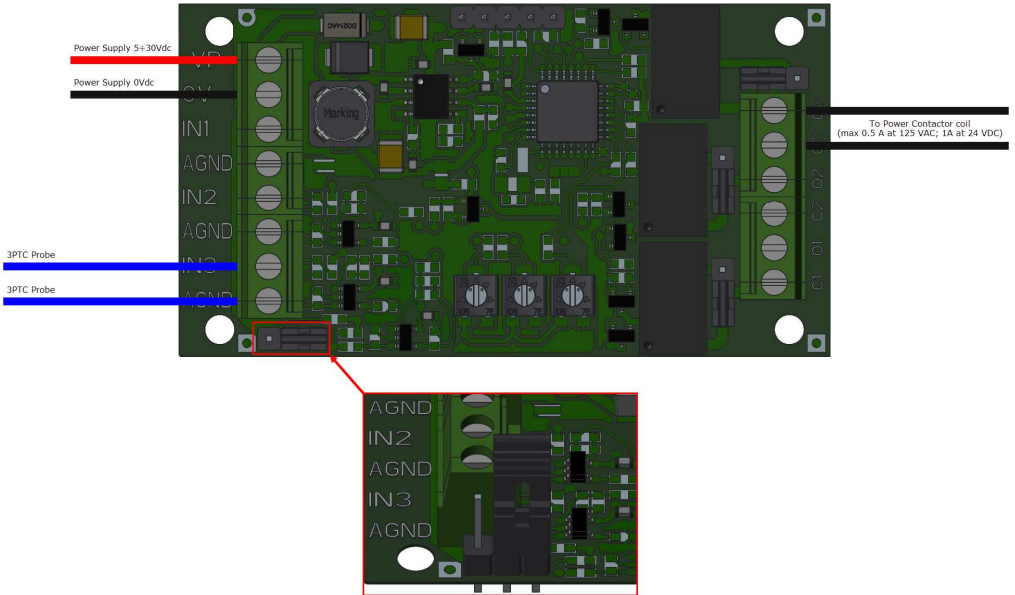
The casing, simple and compact, allows this device to be mounted on a DIN rail.



Supply voltage: 5 ÷ 30Vdc max 100mA.



Connection and setting for PTC thermistor



Connection and setting for PT100 probes

